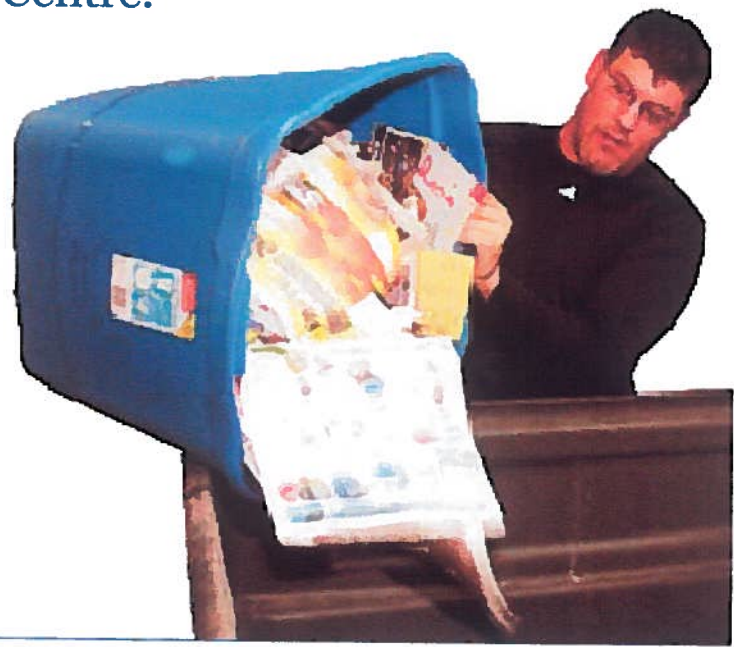


Yes!

Place these items loose in your blue cart or take to the Recycling Centre.

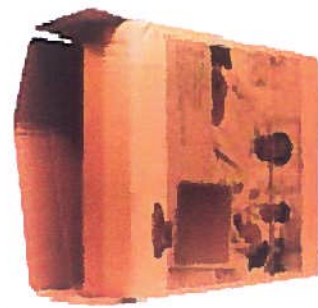
How to prepare your materials:

- Place all recyclables loose in your blue cart – no sorting is required.
 - Clean off bits of food and other residue.
 - Remove labels from metal food cans, glass bottles, plastic containers, etc.
 - Remove lids and caps.
 - Place metal food can lids inside the can or leave attached.
 - Remove plastic wrapping from magazines and catalogues.
 - Material shouldn't be in bags, with two exceptions:
 - Bundle plastic bags into one plastic bag and tie closed.
 - Place shredded paper in a clear plastic bag and tie closed.
- If in doubt, leave it out and check it out at www.crossfieldalberta.com/page/garbage_recycling.aspx



Paper and cardboard

- Newspapers and paper inserts (not tied in bundles).
- Catalogues and magazines (with plastic wrapping removed).
- Paper (e.g. letters, envelopes and window envelopes, greeting cards, brochures, non-foil gift wrap, paper bags).
- Cardboard (e.g. cereal boxes, pizza boxes, tissue boxes, paper towel tubes and toilet paper tubes).
- Telephone books and paperback books.
- Shredded paper (must be in a clear plastic bag and tied closed).
- Soup and beverage containers (e.g. Tetra Pak® packages).



Metal food cans and foil

- Clean metal food cans.
- Metal lids and caps.
- Clean aluminum foil, aluminum foil plates and containers.



Glass jars and bottles

- Clean off food and residue.
- Remove labels.



Plastic jugs, bottles and food containers



- Clean plastic containers labelled with the recycling symbol 1-7.
- No foam cups, food containers or packaging even if labelled with recycling symbol.
- Liquid detergent, fabric softener and shampoo bottles, plastic clamshell trays, yogurt and margarine containers.
- Plastic lids that have a recycling symbol 1-7.
- Plastic bags, clean plastic wrap and bubble wrap. Bundle into one plastic bag and tie closed.



Beverage containers

- Refundable beverage containers can be returned to bottle depots for deposit refunds. However, they are also accepted in blue carts and at community depots.
- Milk containers, juice cartons, wine and beer bottles, water bottles, beverage cans and Tetra Pak® packages are all refundable.

