



Look here for all you need to know about using your **RECYCLING** cart.

CURBSIDE RECYCLING PROGRAM

Town of Crossfield
(403) 946-5565
town@crossfieldalberta.com
www.crossfieldalberta.com

CART PLACEMENT REMINDERS

HOW YOU PLACE YOUR CARTS IS IMPORTANT

The mechanical arms that pick up the carts need room to operate safely and effectively.

- Place your household recycling in the carts. The lids must close completely.
- Roll your carts to the curb or alleyway. Park them on flat ground and make sure they are not blocking traffic.
- Curbside: place cart wheels against the front curb.
- Alleyway: place cart wheels at least one foot (30cm) from your back hedge or fence.
- Point the arrows on the lid toward the centre of the road or alleyway.

OTHER PLACEMENT NOTES

- Carts should be at least one foot (30cm) apart.
- There should be at least 10 feet (3m) of space above your carts.
- Please ensure carts are at least three feet (1m) from obstacles on either side (parked cars, power poles, utility boxes, fences, downspouts and garages).

WHAT TO INCLUDE IN YOUR RECYCLING CART

Use the list on the recycling cart as a guide. All recyclables should be clean and free of debris.

YOUR CARTS SHOULD NEVER INCLUDE:

- Household hazardous waste, household chemicals, used paint or other hazardous waste that could harm your collector and the environment.
- Yard waste, construction and demolition waste, household appliances and furniture should not go in your carts.

For more information on the disposal of the above noted items, please visit crossfieldalberta.com or call the Town office at (403) 946-5565.

MORE INFORMATION

COLLECTION DAY

Collection day will be weekly on Thursdays. Pick up days are subject to change during holidays. Remember to set your carts out by 7 a.m.

STYROFOAM

Styrofoam cannot be included in your recycling cart. Please recycle these items at the Recycling Depot.

IDENTIFY YOUR CART

Record your cart serial numbers on the magnet enclosed within this brochure and write your address on the carts with a permanent marker. This will help identify your carts if they ever go missing or need repairs.

CART STORAGE AND CLEANING

You are responsible for taking care of your carts and keeping them clean.

DAMAGED OR MISSING CARTS

If your cart is damaged or missing, call the Town office at (403) 946-5565 immediately.

WASTE ENCLOSURES

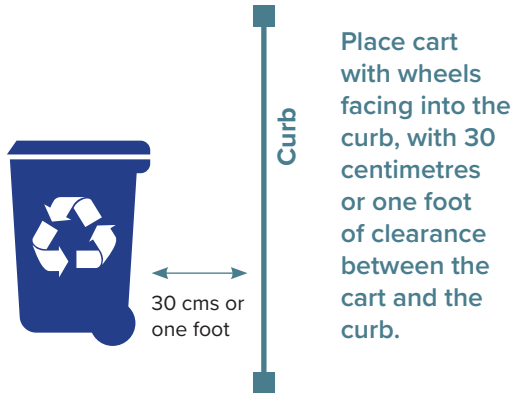
You can store your recycling cart in an enclosure between collection days, but you must set it out for pick-up. Carts will NOT be collected from enclosures.

MOVING?

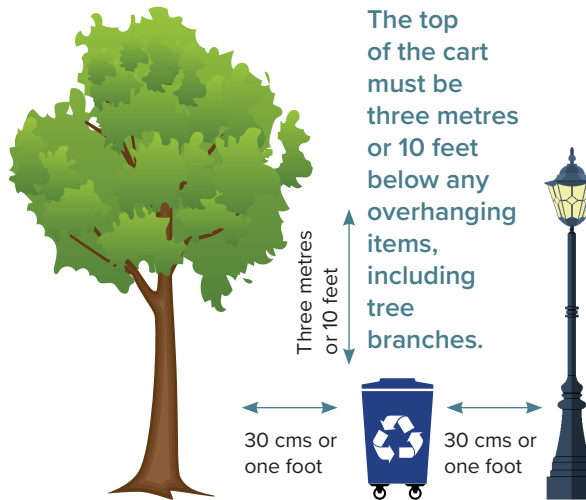
Carts are the property of the Town of Crossfield and are assigned to residences rather than to people.

Please DO NOT take your cart with you when you move. If you need carts at your new residence, call the Town office at (403) 946-5565.

CART PLACEMENT REMINDERS



Place cart with wheels facing into the curb, with 30 centimetres or one foot of clearance between the cart and the curb.



The top of the cart must be three metres or 10 feet below any overhanging items, including tree branches.

Leave 30 centimetres or one foot of distance on both sides between the cart and other objects.

CART DOS AND DON'TS

- Cart cannot block traffic.
- Alley pickup: ensure cart is stored in a way that doesn't interfere with alley traffic or maintenance.
- All recyclables must be inside the cart, not placed beside or on top of it.
- Cart must be placed on level ground, not on a slope or hill.
- Carts will not be collected from inside enclosures.
- Place your cart out for collection by 7 a.m. and move back onto your property by 10 p.m.
- Carts will not be collected from inside enclosures.



For more information regarding the Town of Crossfield's recycling program, please visit crossfieldalberta.com or call the Town office at (403) 946-5565.

ACCEPTABLE MATERIALS

